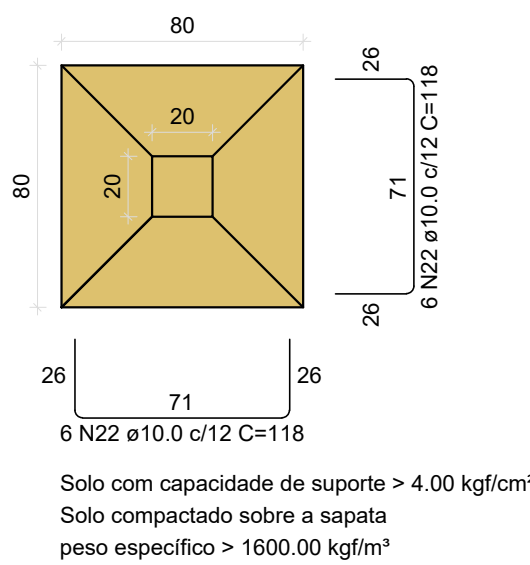
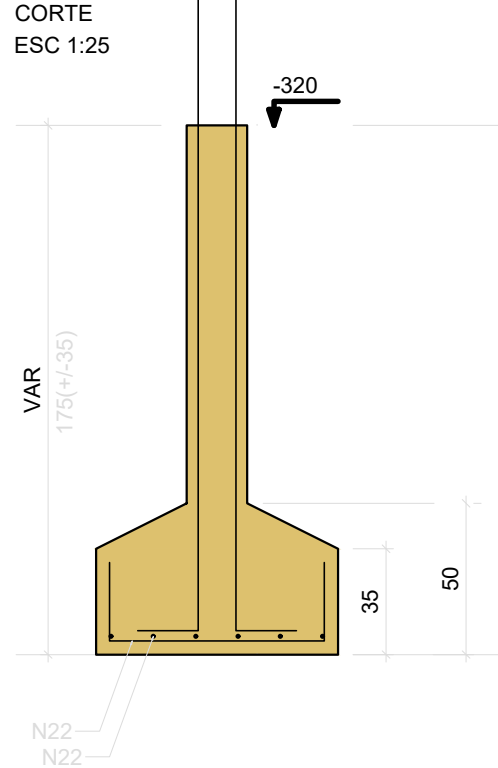


S33=S34

PLANTA  
ESC 1:25



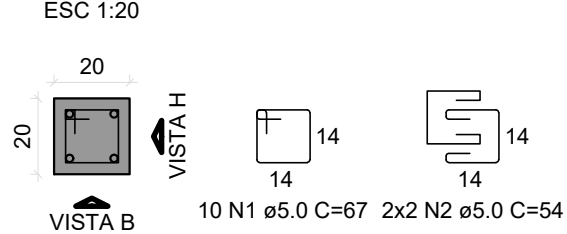
CORTE  
ESC 1:25



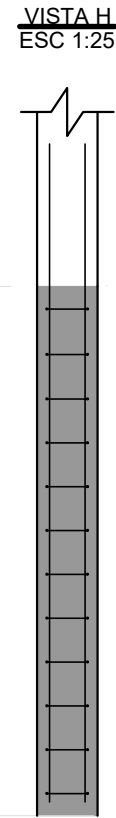
P33=P34

FUNDAÇÃO - L1

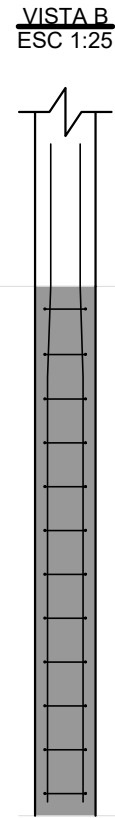
SEÇÃO  
ESC 1:20



VISTA H  
ESC 1:25

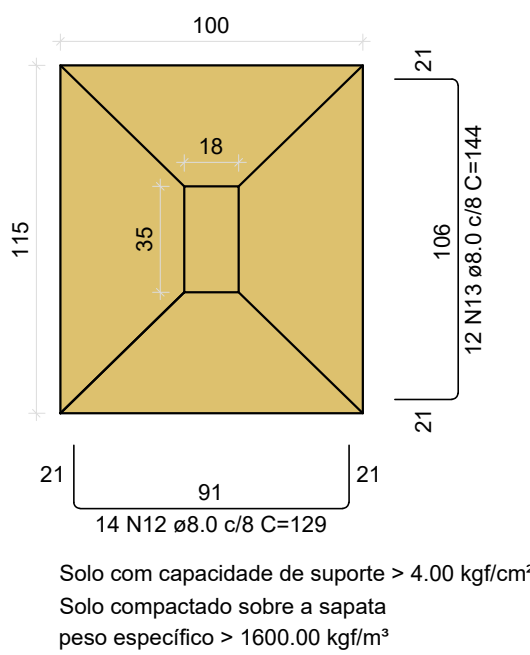


VISTA B  
ESC 1:25

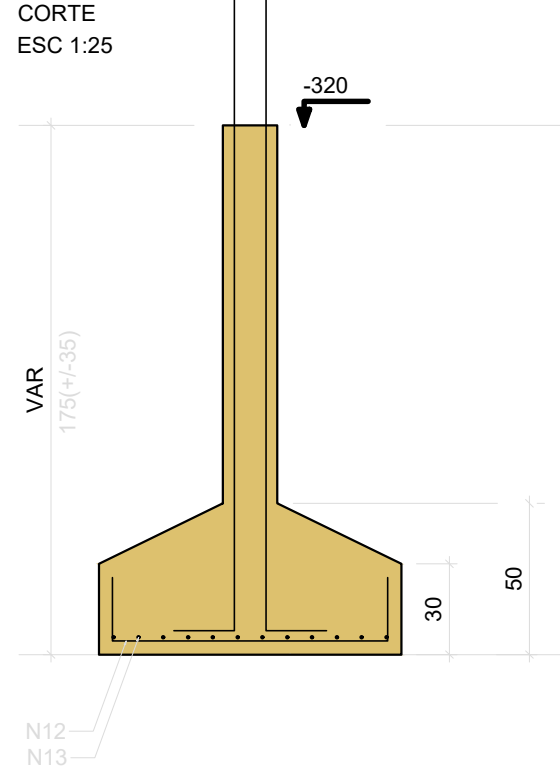


S41

PLANTA  
ESC 1:25



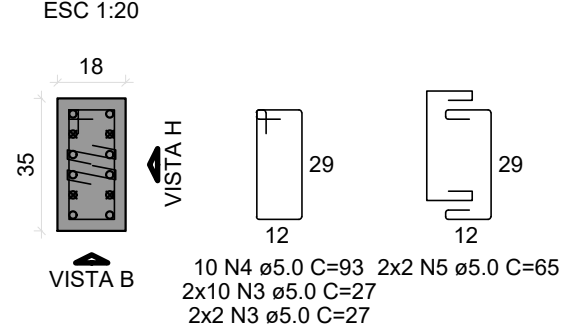
CORTE  
ESC 1:25



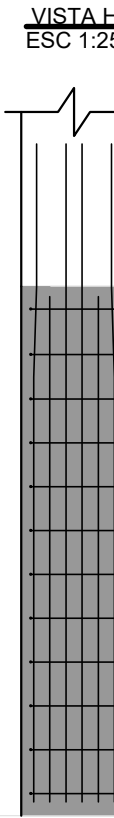
P41

FUNDAÇÃO - L1

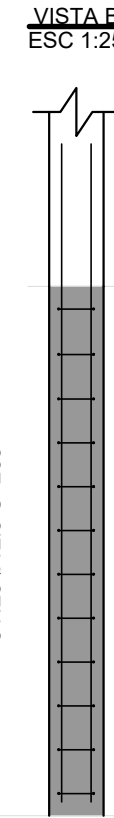
SEÇÃO  
ESC 1:20



VISTA H  
ESC 1:25



VISTA B  
ESC 1:25



RELAÇÃO DO AÇO

AÇO	N	DIAM (mm)	QUANT	C.UNIT (cm)	C.TOTAL (cm)
CA60	1	5.0	20	67	1340
	2	5.0	8	54	432
	3	5.0	36	27	972
	4	5.0	20	93	1860
	5	5.0	8	65	520
	6	5.0	26	34	884
	7	5.0	23	117	2691
	8	5.0	12	84	1008
	9	5.0	48	34	1632
	10	5.0	13	107	1391
	11	5.0	8	79	632
CA50	12	8.0	14	129	1806
	13	8.0	12	144	1728
	14	8.0	9	94	846
	15	8.0	7	104	728
	16	8.0	23	124	2852
	17	8.0	12	139	1668
	18	8.0	11	109	1199
	19	10.0	10	227	2270
	20	10.0	4	185	740
	21	10.0	2	75	150
	22	10.0	24	118	2832
	23	10.0	8	128	1024
	24	10.0	7	143	1001
	25	12.5	24	235	5640
	26	12.5	10	184	1840
	27	12.5	2	94	188

RESUMO DO AÇO

AÇO	DIAM (mm)	C.TOTAL (m)	PESO + 10% (kg)
CA50	8.0	108.3	47
	10.0	80.2	54.4
CA60	5.0	132	22.4

PESO TOTAL (kg)

CA50 182.6

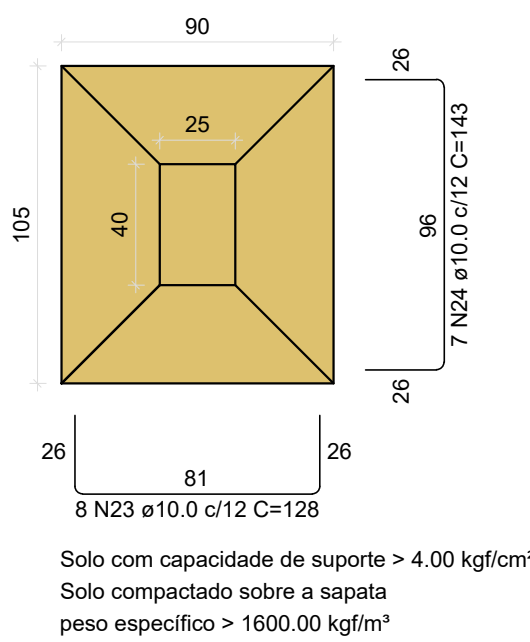
CA60 22.4

Volume de concreto (C-25) = 2.93 m³

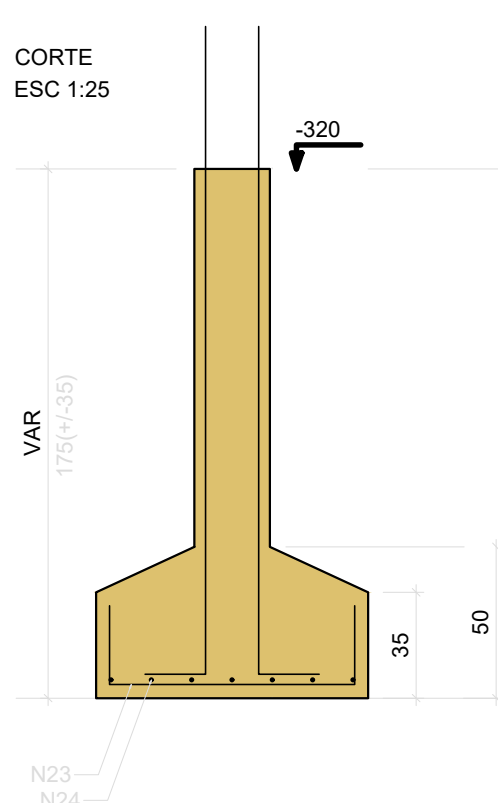
Área de forma = 17.48 m²

S42

PLANTA  
ESC 1:25



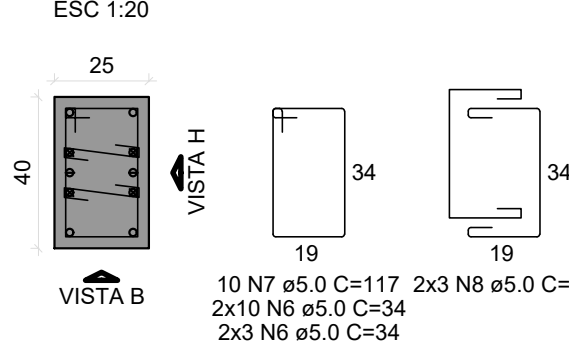
CORTE  
ESC 1:25



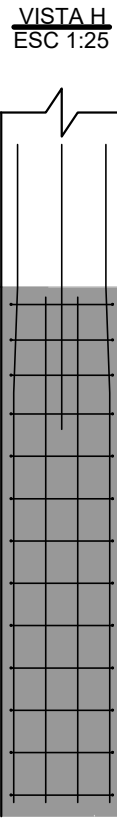
P42

FUNDAÇÃO - L1

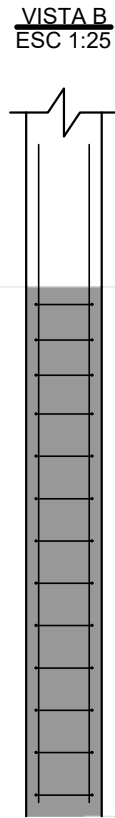
SEÇÃO  
ESC 1:20



VISTA H  
ESC 1:25

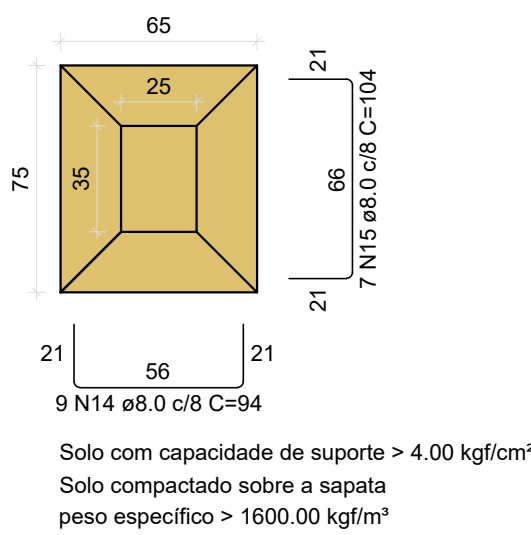


VISTA B  
ESC 1:25

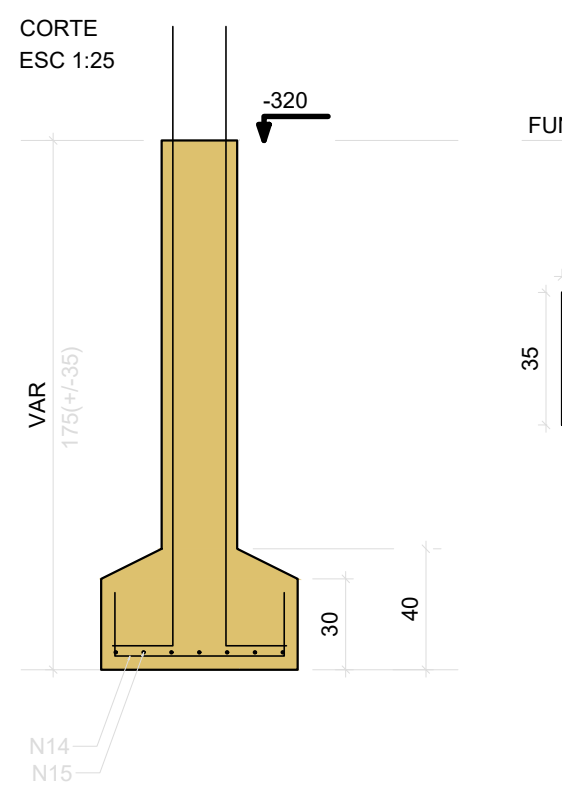


S44

PLANTA  
ESC 1:25



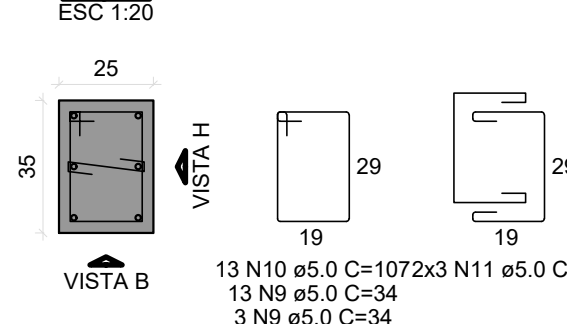
CORTE  
ESC 1:25



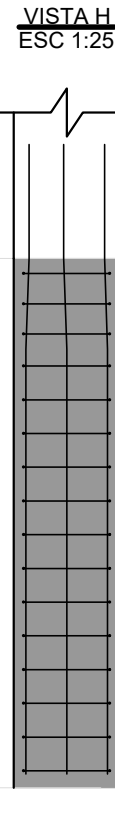
P44

FUNDAÇÃO - L1

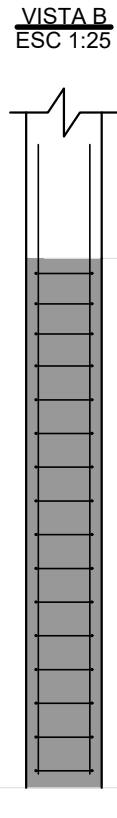
SEÇÃO  
ESC 1:20



VISTA H  
ESC 1:25

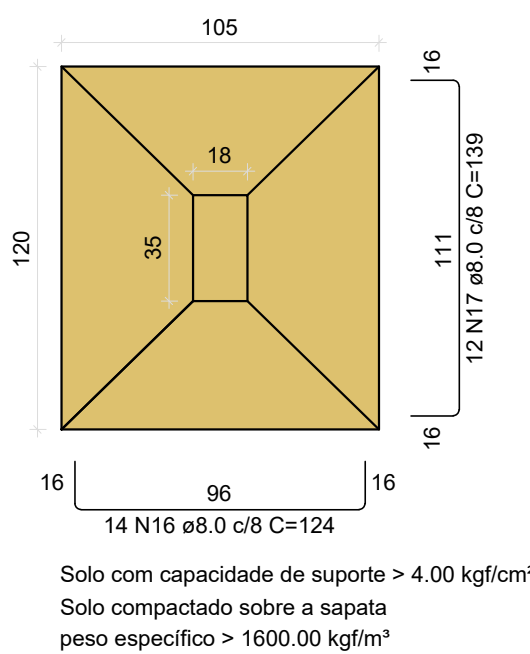


VISTA B  
ESC 1:25

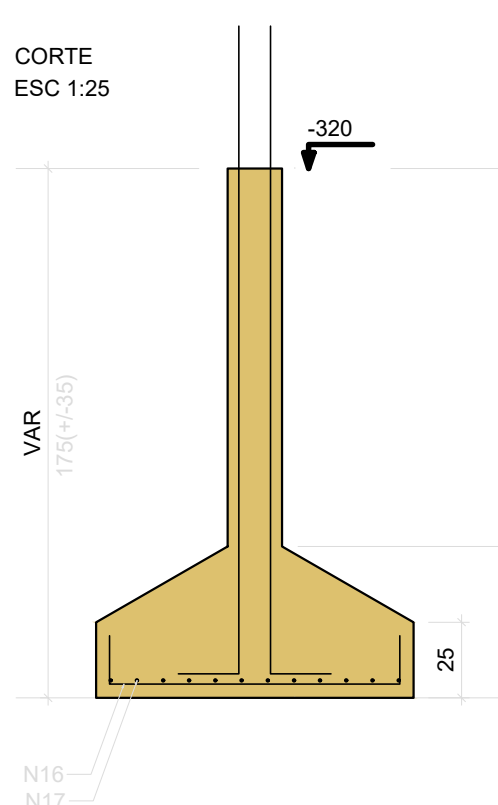


S47

PLANTA  
ESC 1:25



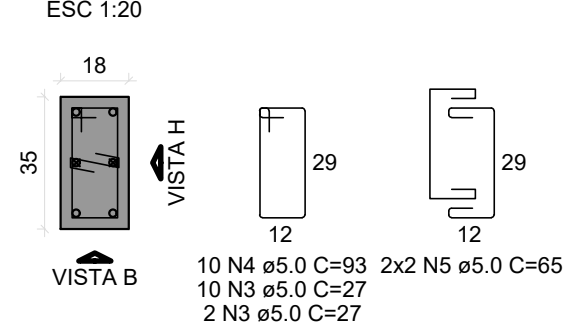
CORTE  
ESC 1:25



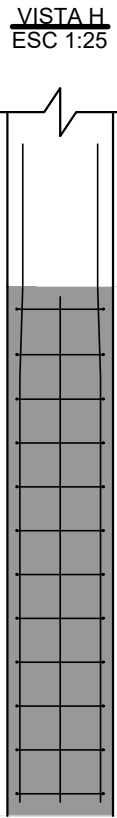
P47

FUNDAÇÃO - L1

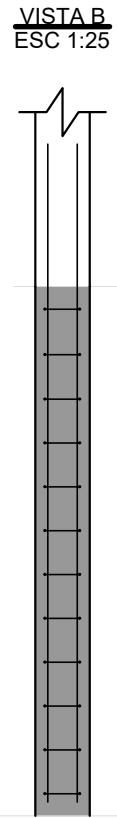
SEÇÃO  
ESC 1:20



VISTA H  
ESC 1:25

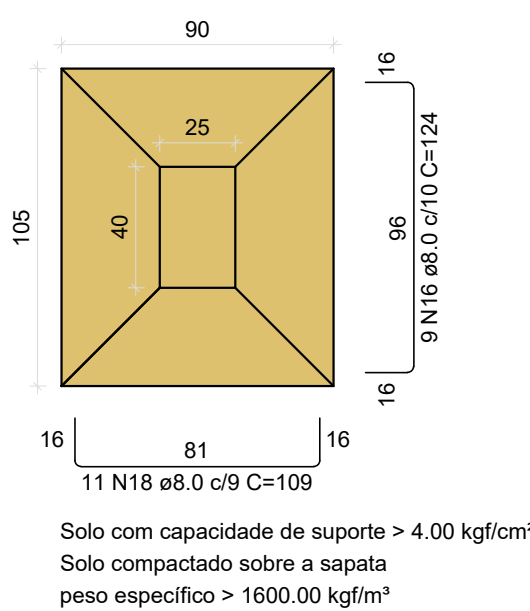


VISTA B  
ESC 1:25

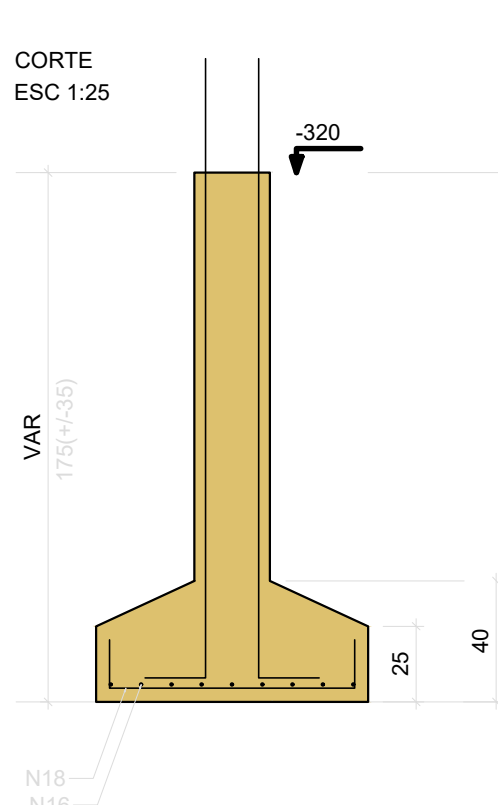


S48

PLANTA  
ESC 1:25



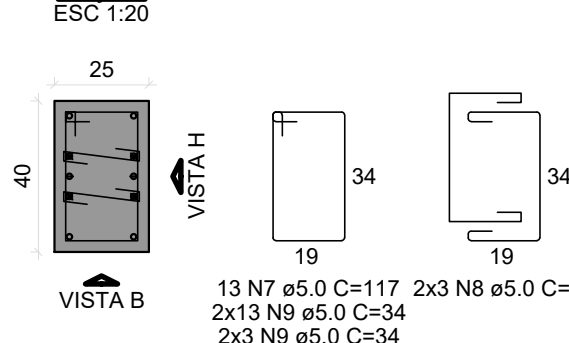
CORTE  
ESC 1:25



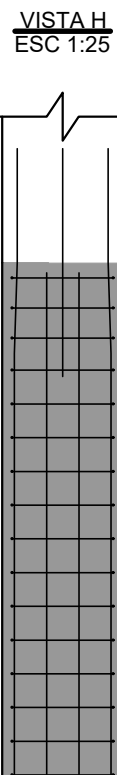
P48

FUNDAÇÃO - L1

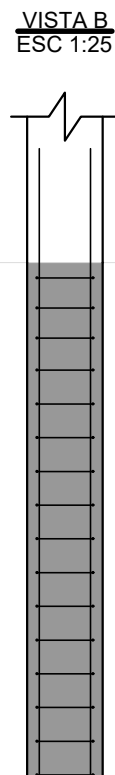
SEÇÃO  
ESC 1:20



VISTA H  
ESC 1:25



VISTA B  
ESC 1:25



BLOCO ÁREA COMUM PRANCHAS: 212 a 295

REVISÃO	DESCRIÇÃO	REVISADO POR	DATA
REVISÃO 00	EMISSION INICIAL	WAGNER	MARÇO/2024
<div><div><div>SECRETARIA DE ESTADO DA SEGURANÇA PÚBLICA</div><div></div><div>DIRETORIA DE ARQUITETURA E EDIFICAÇÕES</div></div><div><div>PRAÇA TOBIAS BARRETO, nº 20, BARRIO SÃO JOSÉ</div><div>CEP: 49050-220 ARACAJU/SE</div><div>TELS: (79)3216-5454 / (79)98851-9337</div></div></div>			
TIPO PROJETO ESTRUCTURAL EXECUTIVO DA CONSTRUÇÃO DO CENTRO INTEGRADO DE SEGURANÇA PÚBLICA (CISP) EM NOSSA SENHORA DA GLÓRIA/SE			Nº DA PRANCHA
ASSUNTO: BLOCO ÁREA COMUM SAPATAS O8			221/348
END.: RUA ANTÔNIO JOAQUIM DE FARIAS, S/N – N. SRA DA GLÓRIA – SE			
AUTOR DO PROJETO: WAGNER DARY DA SILVA			
RESPONSÁVEL TÉCNICO: WAGNER DARY DA SILVA RN: 270771497-6			
ESCALA: INDICADO	DATA: MARÇO/2024	DESENHISTA: WAGNER DARY DA SILVA	